



# QUICK SET-UP GUIDE

## CARAFE READY • T526S

# A. SET-UP



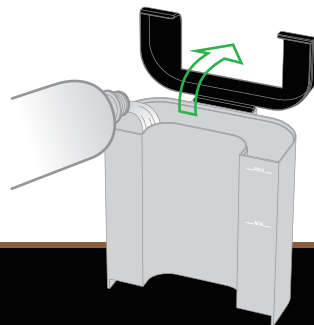
**NOTE:**  
Bottled or filtered water  
is recommended.



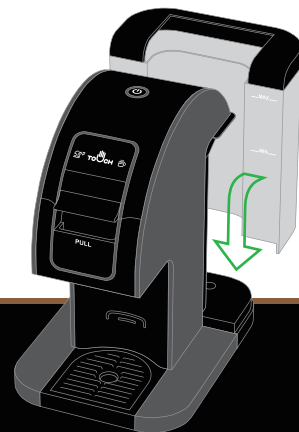
**1** Remove adhesive tapes.  
Unwrap the Power Cord.



**2** Remove the Water Tank by  
tilting and lifting away from  
the Brewer.



**3** Rinse the Water Tank several  
times. Fill with water.



**4** Place the Water Tank and  
Lid back on to the Brewer.



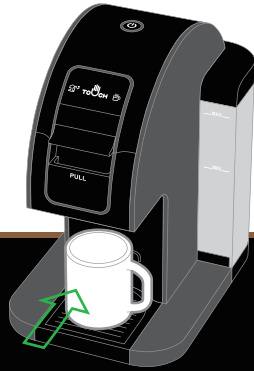
**WARNING:**  
DO NOT pull the Latch  
while brewing.



**NOTE:**  
The first brewing cycle may take  
up to 30 seconds to start.



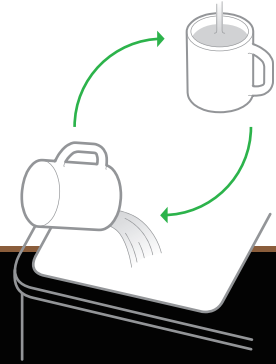
**5** Plug the Power Cord into  
an electrical outlet.  
Press the Power Button.



**6** Place a large mug or cup  
on the Drip Tray. (min. 12oz)

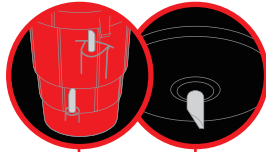


**7** Press on the 10 oz Cup Size  
Button to start brewing.

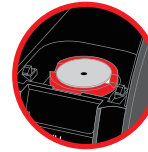


**8** Discard the hot water and  
repeat steps 6 and 7 at least  
two (2) more times.

# B-1. BREW



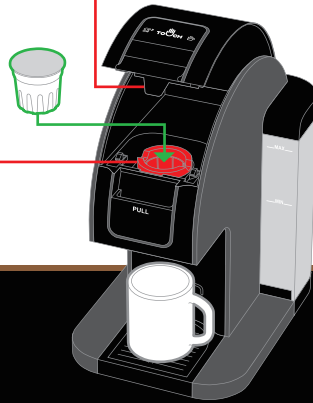
**⚠ WARNING:**  
Sharp Needles on the Top Cover  
and in the Red Cup Holder.



**⚠ WARNING:**  
Coffee Pod may be HOT.



**9** Place a mug on the Drip Tray and lift the Cover by pulling on the Latch.



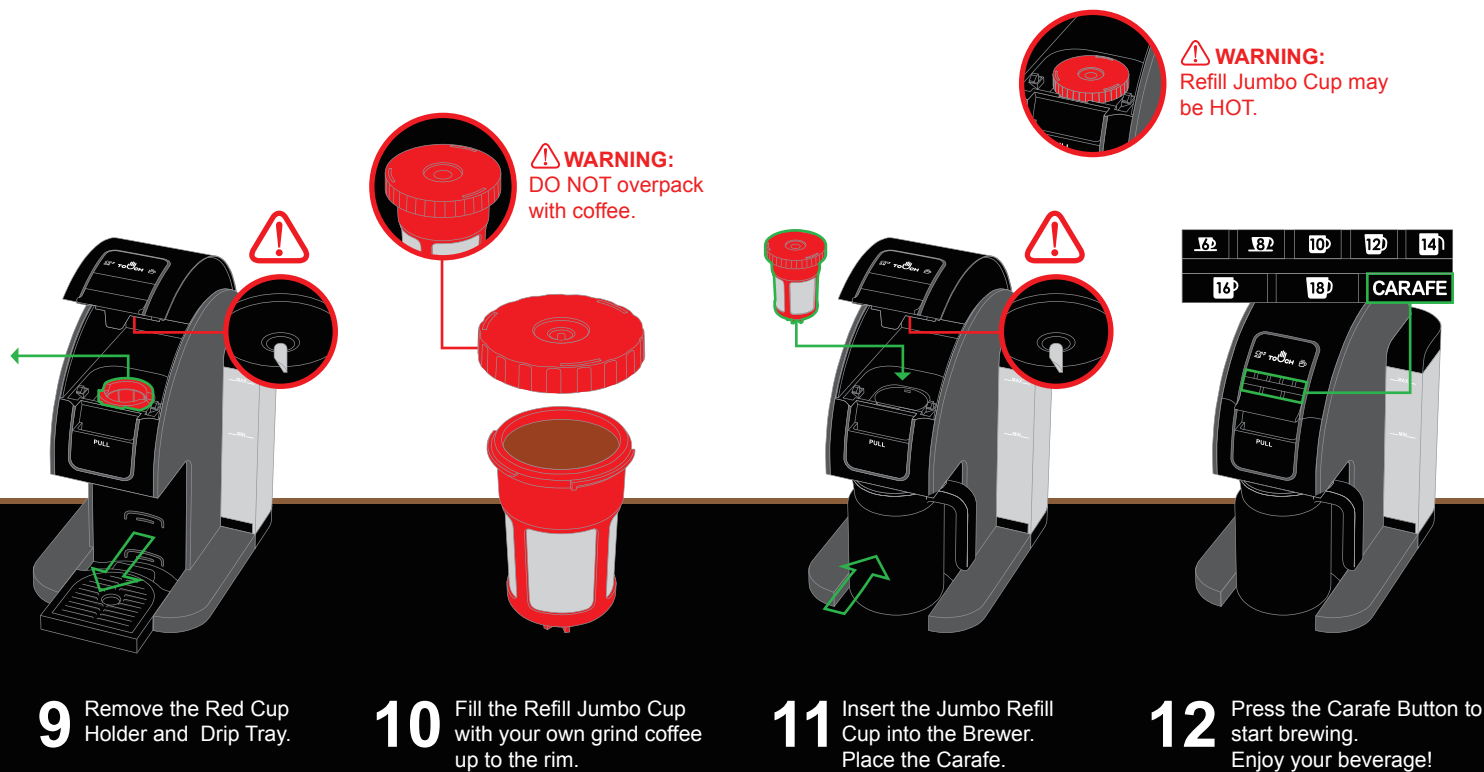
**10** Insert a coffee pod into the Red Cup Holder. Close the Cover.



**11** Press the desired Cup Size Button to start brewing. Enjoy your beverage!

XBold Cup™ for 8-14 oz Buttons.  
XLarge Cup™ for 16-18 oz Buttons.

## B-2. REFILL JUMBO CUP





## For Household Use Only

To learn more about Touch, visit [www.touchbeverages.com](http://www.touchbeverages.com) or Call Toll-Free: 844-20TOUCH (844-208-6824)

© 2014 Touch, Incorporated All rights reserved